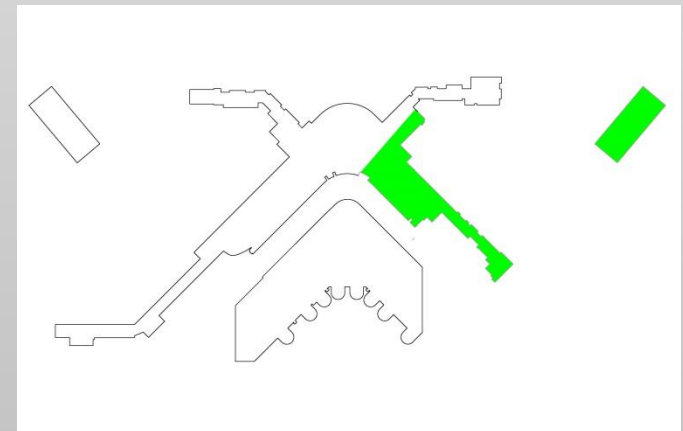


North Terminals Utilities Upgrade Project C800717



The Problem

- Existing North End HVAC utility pipes are undersized for the current and future 66 MAP/SAMP



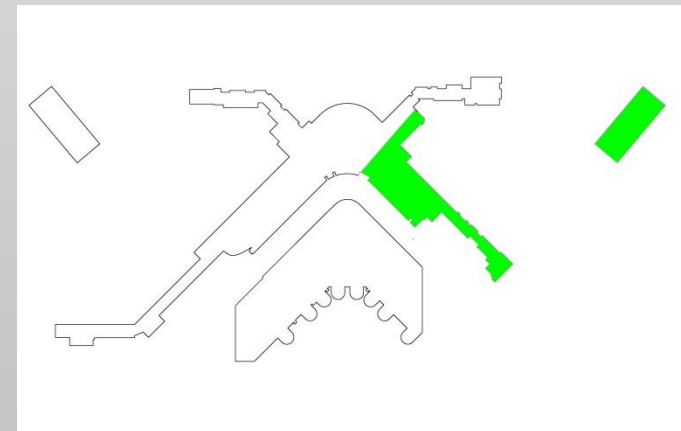
The Solution

- Replace and extend the existing 45 year old undersized HVAC utility piping.
- Connect this new HVAC piping to the South and West HVAC utility Loops.
- Create a full interconnected redundant system

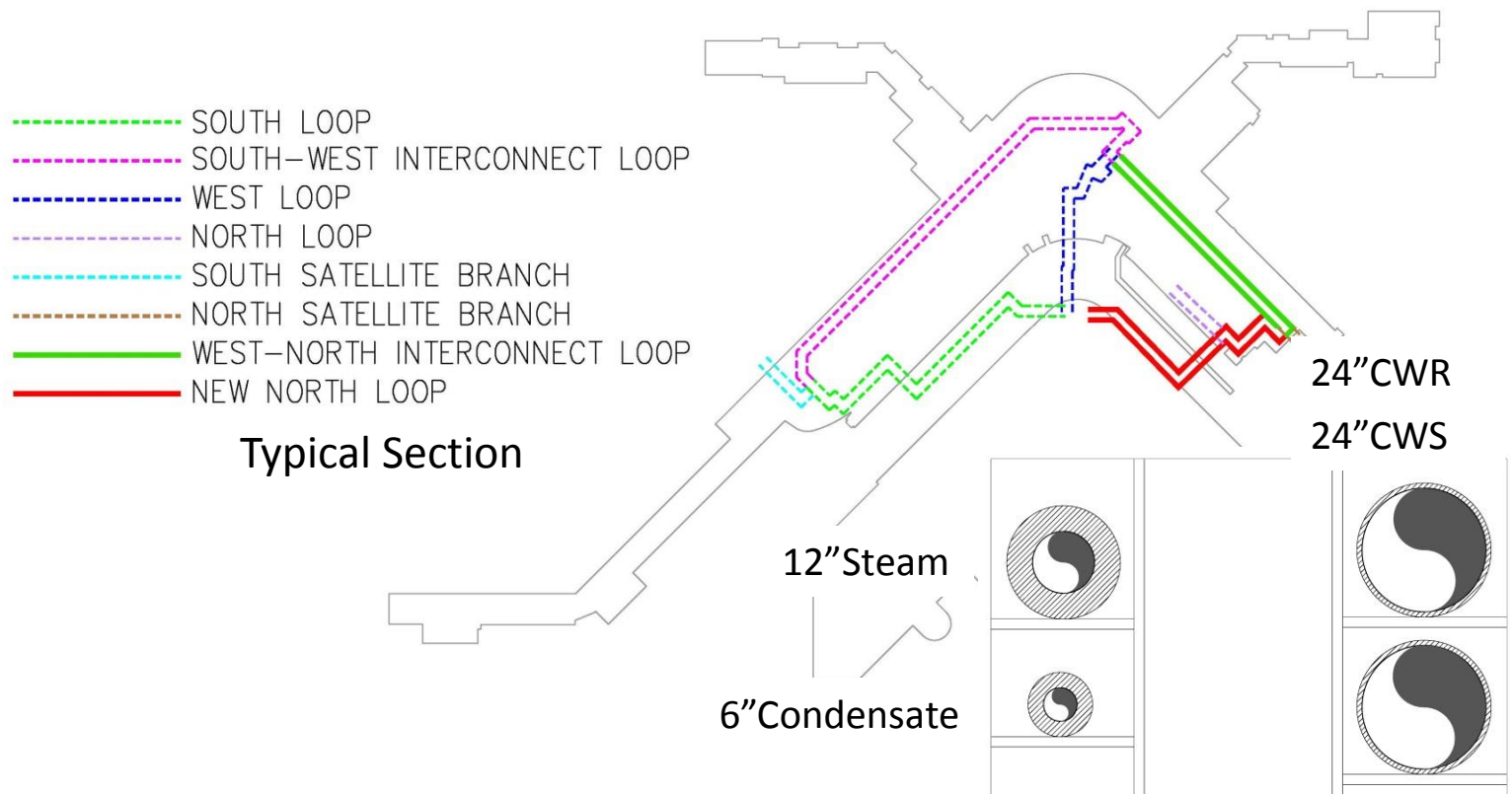


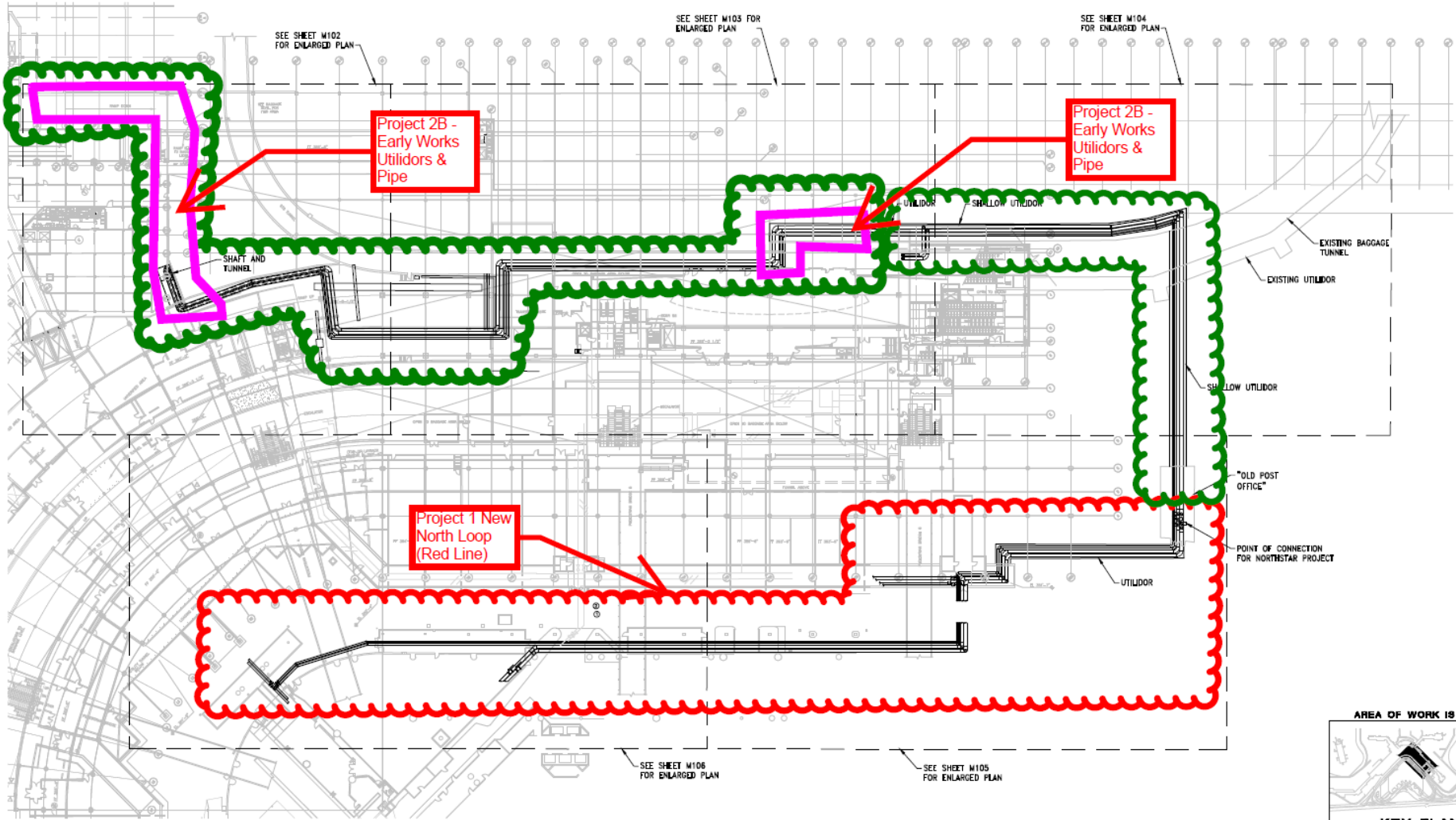
Project Scope

- Provide Heating and Cooling for North Satellite Expansion Project
- Provide Steam, Condensate and Chilled Water for Concourse C & D and North Terminals facilities
- Provide system Redundancy
- Provide Future Capacity
 - 66 MAP/SAMP



Proposed New Utilities Pipe Sizes & Locations





Project 2B -
Early Works
Utilidors &
Pipe

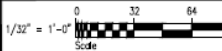
Project 2B -
Early Works
Utilidors &
Pipe

Project 1 New
North Loop
(Red Line)

OVERALL PIPING PLAN
STS LEVEL
PIPING PLAN
SCALE: 1/32" = 1'-0"



**15% CONCEPT SUBMITTAL
NOT FOR CONSTRUCTION**



CALL 2 DAYS
BEFORE YOU DIG
1-800-424-5555

notkin
www.notkin.com
tel: 206.448.1911
fax: 206.448.3485
2301 7th Avenue, Suite 401
Seattle, WA 98121

PROJECT ENGINEER	SR
DESIGNER	BD
DRAWN BY	AK
CHECKED BY	AK
SCALE	1/32" = 1'-0"
DATE	

REVISIONS									
NO.	DATE	BY	DESCRIPTION	APPROVED	DATE	BY	DESCRIPTION	APPROVED	DATE

SEA-TAC PROJECT NUMBER	
PORT PROJECT NUMBER	
DESIGN ENGINEER	
PROJECT MANAGER	
DATE	

Port of Seattle
SEA-TAC INTERNATIONAL AIRPORT
PROJECT NAME: NORTH TERMINAL UTILITIES UPGRADE
PROJECT NUMBER: STS LEVEL OVERALL PIPING PLAN

FOR MORE PROJECT NUMBERS	
UNIFORM PROJECT NUMBER	U00180
GENERAL CONTRACTOR PROJECT NUMBER	
PROJECT NUMBER	215082
FOR PROJECT TRACKING NUMBERS	

Project Challenges and Risks

- Multiple projects all occurring in the same area at the same time.
 - Baggage Optimization
 - Project team requests an early works project be completed to install the utilidor prior to the Baggage Optimization phase one.
- Design will be complex given existing conditions and changes listed above will make to the facilities.
- Means and method for construction will also be complex (large pipes & valves in small spaces).

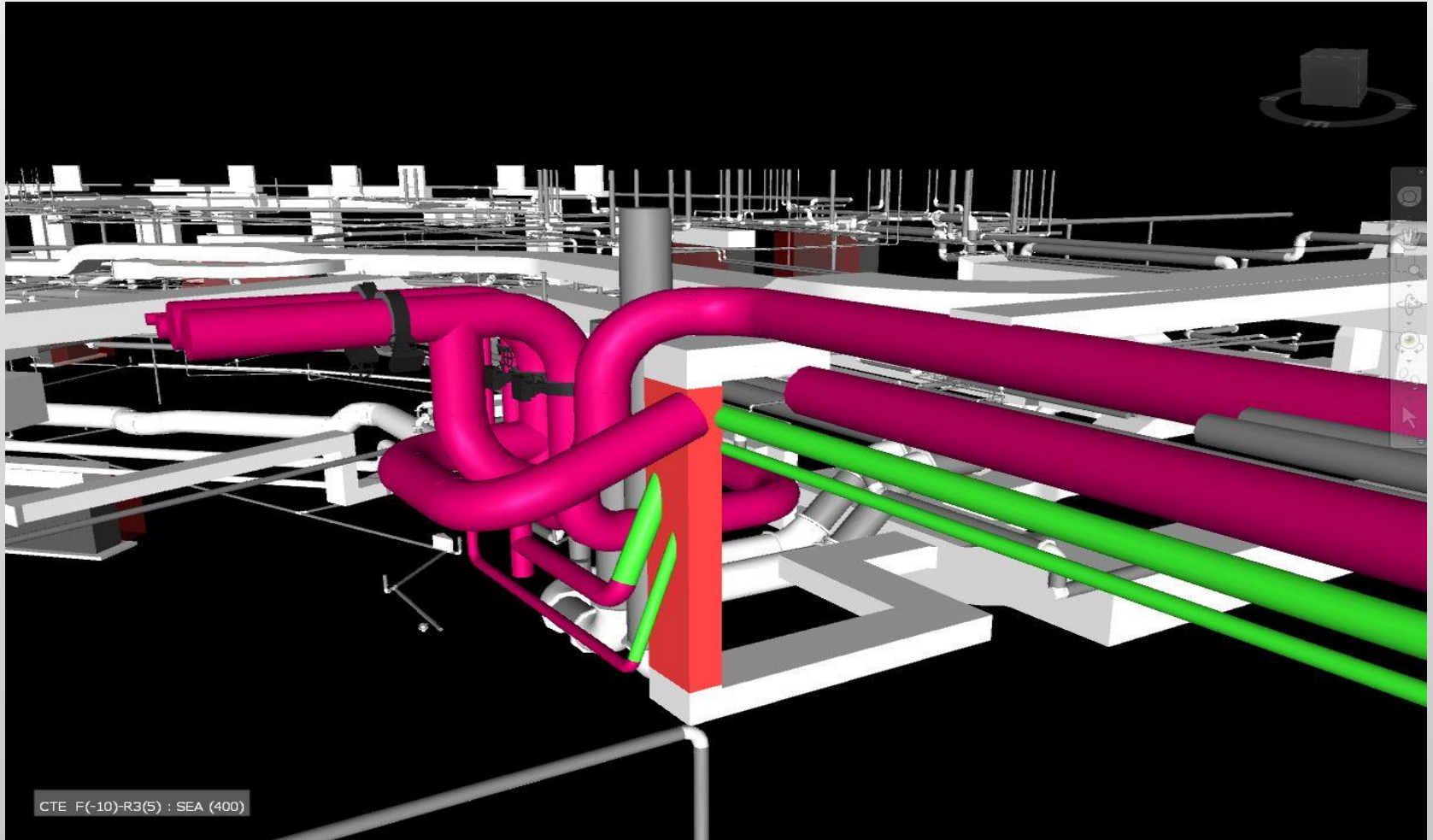
What We Need

- Commission Authorization for construction funding during the design process.
 - Construct the early work utilidor(s) as a stand alone project (project 2B).
 - Design the utilidor (s) from 15% to 100% in the next 100 work days.

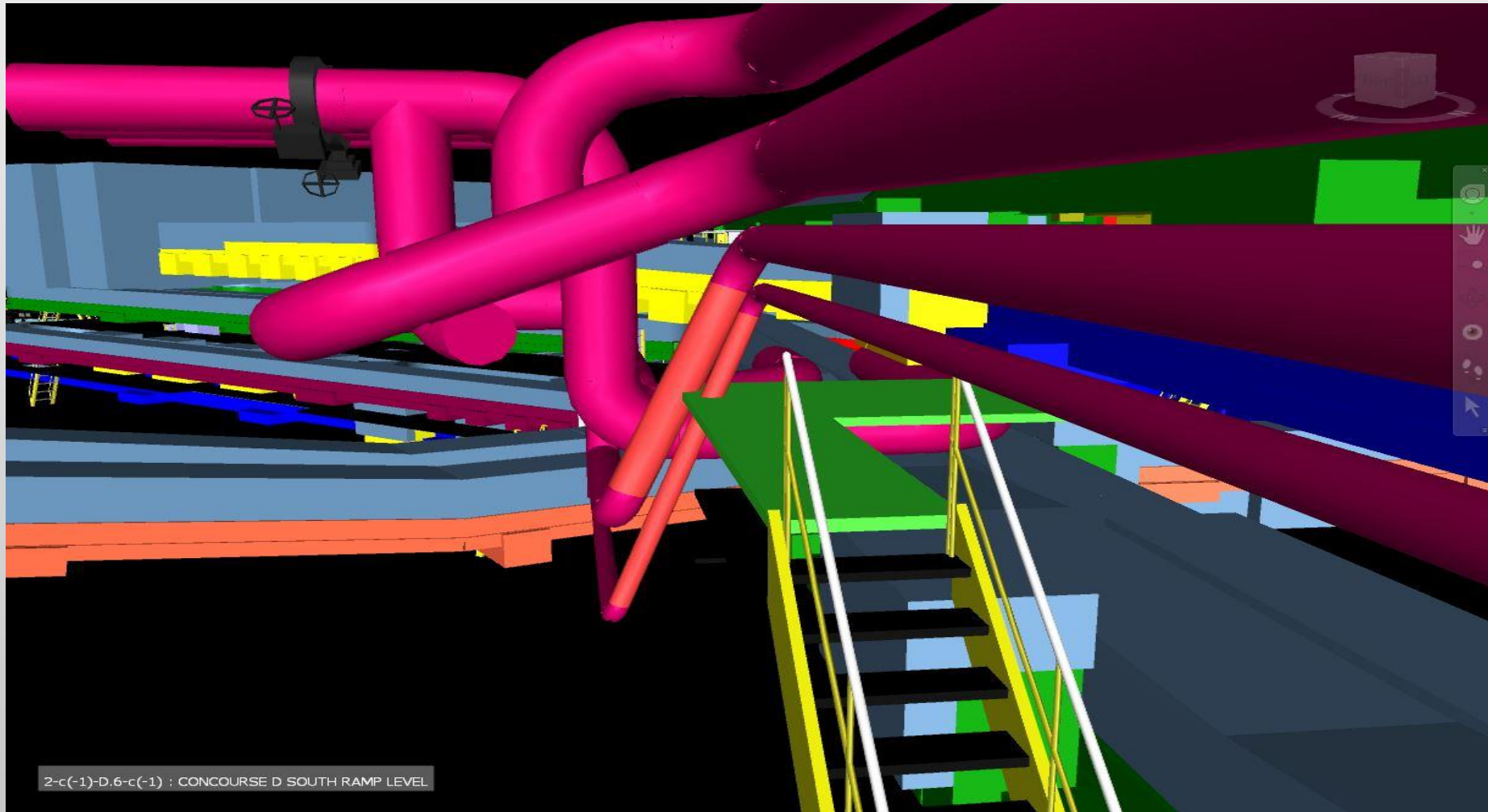
Estimated early work utilidor project cost

Construction	\$6,803,000
Sales Tax	\$ 468,000
<u>Total</u>	<u>\$7,271,000</u>

3D Model North End Utilidor Area



3D Model South End Utilidor Area



2-c(-1)-D.6-c(-1) : CONCOURSE D SOUTH RAMP LEVEL